



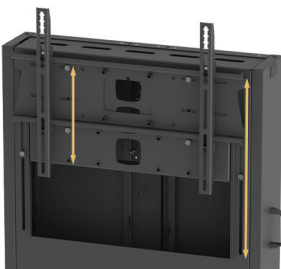
### OVERVIEW

Tailored for AV integrators and enterprise spaces, the Rhobus Plus™ range delivers generous screen capacity, expanded AV storage, and fully customisable setups – all engineered to the UNICOL standard you know and trust.

Whether it's a single- or dual-screen setup (up to 98" and 150kg), the Rhobus Plus is the go-to solution for boardrooms, control centres, collaboration zones, and modern learning environments.

### KEY FEATURES

- Single or twin screen options with mobile trolley, bolt down and floor-to-wall versions.
- Screen height adjustment offering support for a range of screen sizes and video conference camera placement.
- Ample lockable storage within cabinet, including 4x removable AV vertical equipment trays (310w x 488h mm each).
- Vertical zonal air circulation to keep kit running smoothly, even during periods of high demand.
- Compatible with our video conference, sound bar and video bar mount range.



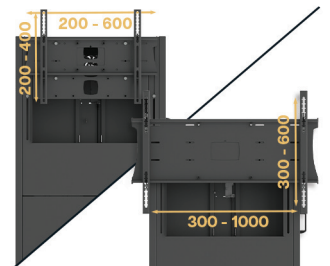
Screen height adjustment for optimal viewing height or to incorporate video conference kit.



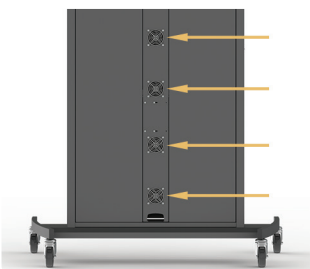
Installation options to suit any meeting room size. Twin screen versions also available.



Built-in power socket with convenient cable management for easy & neat connectivity.



Universal screen mount is incorporated as standard - covering wide range of VESA.



Zonal air circulation keeps the internal equipment cool and operating efficiently.



4x removable AV vertical equipment trays allow for simple maintenance.



Customisation includes RAL colour finishes, logo branding, choice of door finishes & more.



Compatible with a wide range of sound bar, video conference and video bar accessories.



### RP100

Rhobus Plus Standard Trolley

Dimensions (mm)	1960h 1282w 695d
Height Screen Centre	1390-1840
Weight (kg)	114
Screen Size	55 - 70"
VESA Fixings	200x200 / 600x400
Weight Capacity (kg)	60
Colour Options	■ □
Cost £ (exc. VAT)	POA



### RPFWSH

Rhobus Plus Floor-to-Wall Stand

Dimensions (mm)	1822h 925w 283d
Height Screen Centre	1210-1660
Weight (kg)	95.8
Screen Size	55 - 70"
VESA Fixings	200x200 / 600x400
Weight Capacity (kg)	60
Colour Options	■ □
Cost £ (exc. VAT)	POA



### RPBD100

Rhobus Plus Bolt Down Stand

Dimensions (mm)	1822h 925w 253d
Height Screen Centre	1210-1660
Weight (kg)	94.4
Screen Size	55 - 70"
VESA Fixings	200x200 / 600x400
Weight Capacity (kg)	60
Colour Options	■ □
Cost £ (exc. VAT)	POA



### RP100-HD

Rhobus Plus Heavy Duty Trolley

Dimensions (mm)	1960h 1282w 695d
Height Screen Centre	1420-1765
Weight (kg)	120.6
Screen Size	71 - 98"
VESA Fixings	300x300 / 1000x600
Weight Capacity (kg)	150
Colour Options	■ □
Cost £ (exc. VAT)	POA



### RPFWSH-HD

Rhobus Plus Heavy Duty Floor-to-Wall Stand

Dimensions (mm)	1822h 1070w 283d
Height Screen Centre	1240-1585
Weight (kg)	102.4
Screen Size	71 - 98"
VESA Fixings	300x300 / 1000x600
Weight Capacity (kg)	150
Colour Options	■ □
Cost £ (exc. VAT)	POA



### RPBD100-HD

Rhobus Plus Heavy Duty Bolt Down Stand

Dimensions (mm)	1822h 1070w 283d
Height Screen Centre	1240-1585
Weight (kg)	101
Screen Size	71 - 98"
VESA Fixings	300x300 / 1000x600
Weight Capacity (kg)	150
Colour Options	■ □
Cost £ (exc. VAT)	POA