

ITEM NO.	PART NUMBER	DESCRIPTION	QTY.
1	Ass--20001472	GFP Gyrolock Ceiling Plate	1
2	Ass--20001466	G30 Gyrolock Extension 23 To 30cm	1
3	ASS--20027294	Heavy Duty Universal gyrolock arms	1
4	BH-MET-8X20-HT-BO	Button Head Screw M8 X 20 (High Tensile Black Oxide)	2

Description		Gk1u With Heavy Duty Uni Gap	
UNLESS OTHERWISE SPECIFIED: DIMENSIONS ARE IN MILLIMETERS	Mod Date	11/21/2017	REVISION A-001
	Drawn Date:	11/21/2017	
SURFACE FINISH: Powder Coated	DRAWN Tim Smith		MOD BY SYSTEM
Unicol Engineering Green Road Oxford OX3 8EU		DWG NO. Ass--20031186	

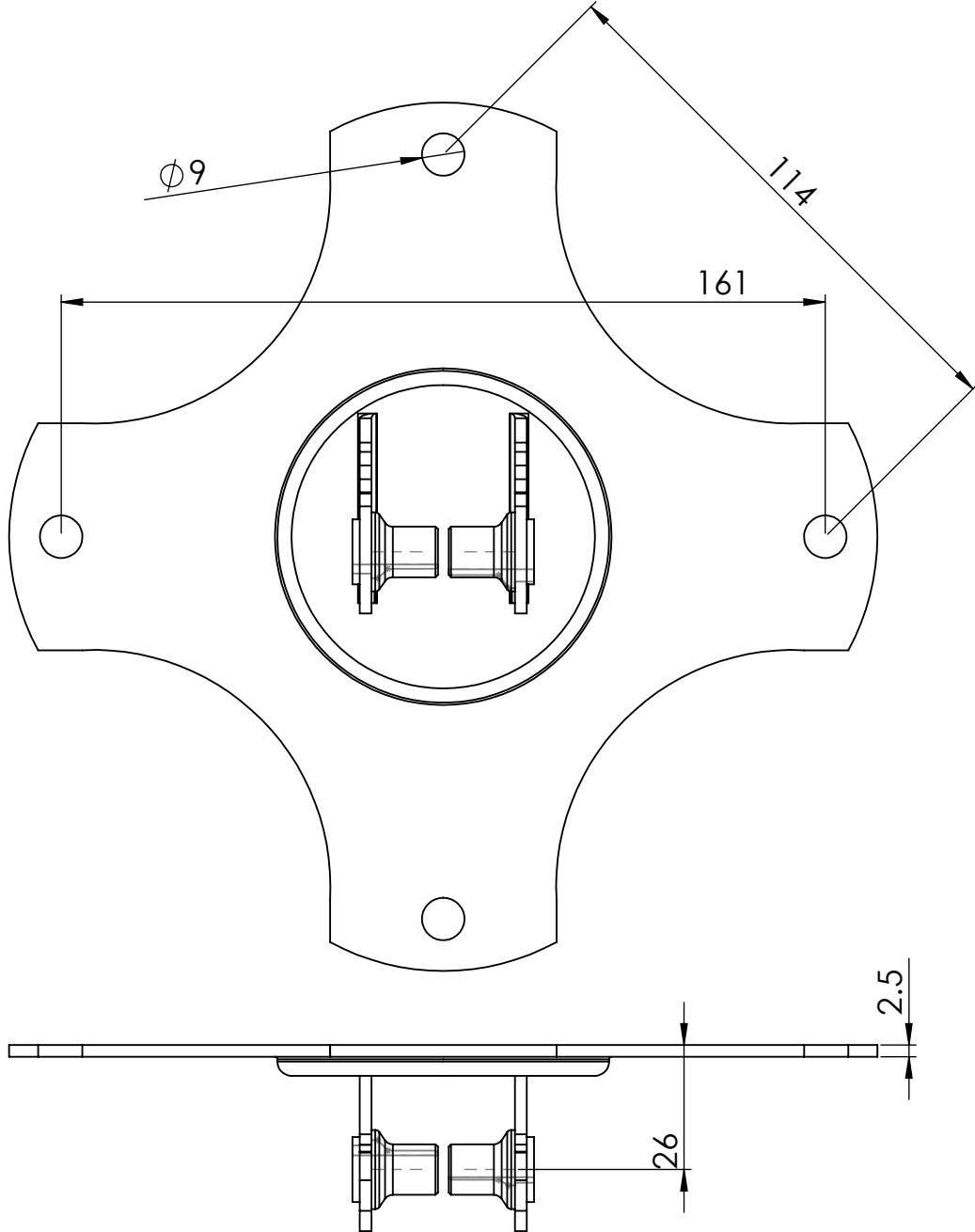
See Below - Fixings Required

WEIGHT: 1.06 Kg

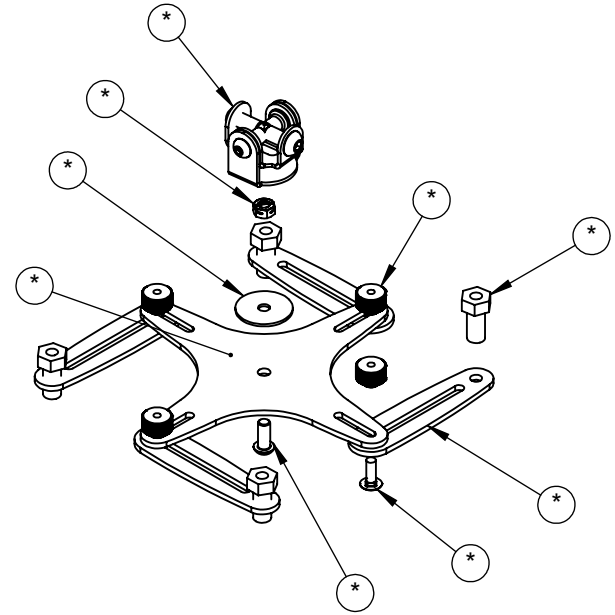
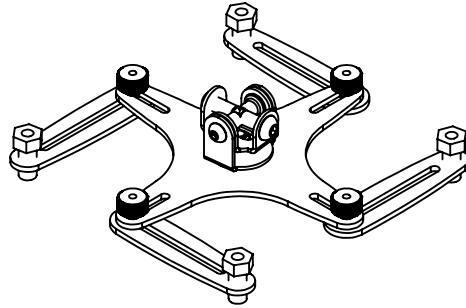
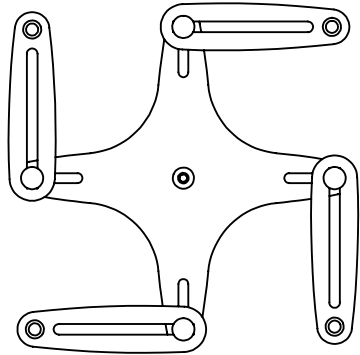
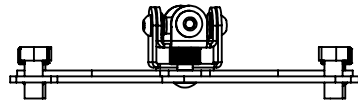
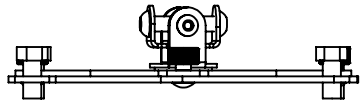
SCALE:1:5 DO NOT SCALE DRAWING SHEET 1 OF 4

A4

ITEM NO.	PART NUMBER	DESCRIPTION	QTY.
1	Par--20002587	GFP Gyrolock Ceiling Plate	1
2	Par--20002588	GFP Gyrolock Ceiling Plate Swivel U-Bracket	1
3	8mm on 4mm Plate	Rivnut	2



UNLESS OTHERWISE SPECIFIED: DIMENSIONS ARE IN MILLIMETERS SURFACE FINISH: TOLERANCES: LINEAR: ANGULAR:		FINISH:		DEBUR AND BREAK SHARP EDGES		DO NOT SCALE DRAWING		REVISION A-001	
DRAWN		SIGNATURE		DATE		TITLE: GFP Gyrolock Ceiling Plate			
CHKD									
APPV'D									
MFG									
Q.A				MATERIAL:		DWG NO.		Ass--20031186	
						SCALE:1:1.5		SHEET 2 OF 4	
				WEIGHT: 1.0652.37				A4	



BOM Table				
NO	Configuration	Part Number	Description	QTY.
1	Default	PAR--20041063	Heavy Duty Universal Arm	1
2	Default	PAR--20043857	heavy duty gyrolok Universal Slider Arms GAPUNI	4
3	Default	Par--20002515	Thumb Nut GAPUNI	4
4	RHSSNBOLT 0.25-20x0.75x0.75-N	round head short square neck bolt_ai		4
5	Default	PAR--20046469	M12 X 25Mm Hex Head Machine Screw 8Mm Bore Thru	4
6	Default	Ass--20001470	Gyrolock Swivel Joint	1
7	Default	Par--20004154	Fibre washer 38 x 8mm x 1.8mm	1
8	B18.3.4M - 10 x 1.5 x 20 SBHCS --N	socket button head cap screw_unicol ansi metric		2
9	PreviewCfg	Binx Nut 1		1
10	B18.3.4M - 8 x 1.25 x 20 SBHCS --N	socket button head cap screw_unicol ansi metric		1

Description Heavy Duty Universal gyrolock arms

UNLESS OTHERWISE SPECIFIED:
DIMENSIONS ARE IN MILLIMETERS

Mod Date 8/30/2017

REVISION

See Below - Fixings Required

SURFACE FINISH: Powder Coated

Drawn Date:
1/9/2007

A-004

DRAWN Andrew Griffiths

MOD BY SYSTEM

Unicol Engineering
Green Road
Oxford OX3 8EU

DWG NO.

ASS--20027294

A4

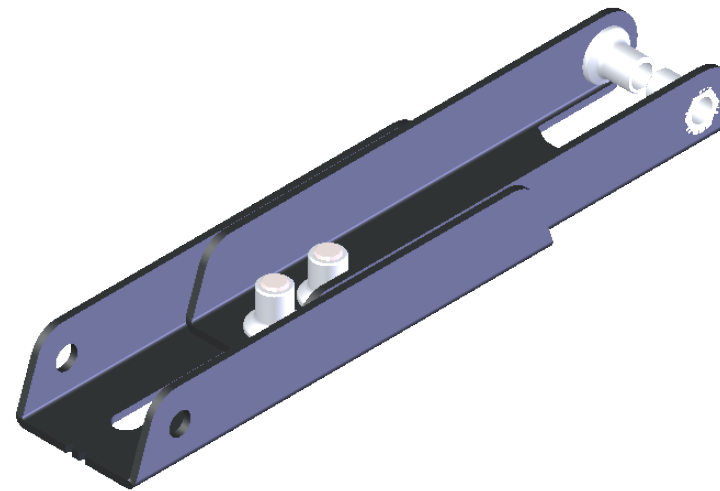
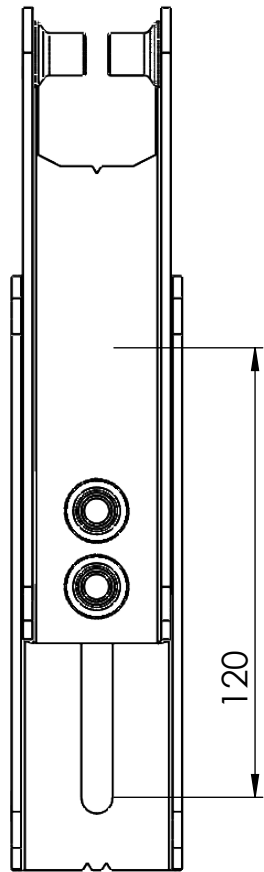
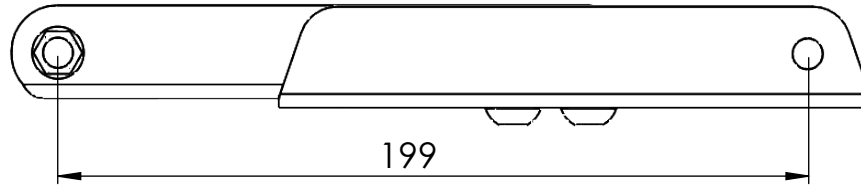
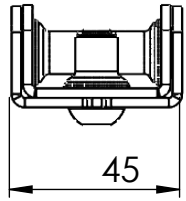
WEIGHT: 922.49

Kg

SCALE:1:5

DO NOT SCALE DRAWING

SHEET 3 OF 4



Description		G30 Gyrolock Extension 23 To 30cm			
UNLESS OTHERWISE SPECIFIED: DIMENSIONS ARE IN MILLIMETERS		Mod Date	4/13/2017	REVISION	Bend & Machine Number
		Drawn Date:	1/24/2007		
SURFACE FINISH: Powder Coated		DRAWN Ricky Clark		Material	DWG NO.
Unicol Engineering Green Road Oxford OX3 8EU		Gauge			
WEIGHT: 67.75		Kg		SCALE:1:2	DO NOT SCALE DRAWING
				SHEET 4 OF 4	

Bend Tool

A4