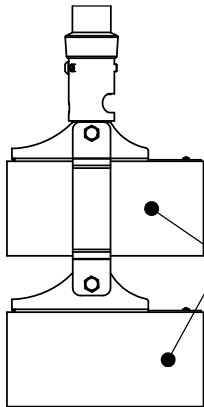
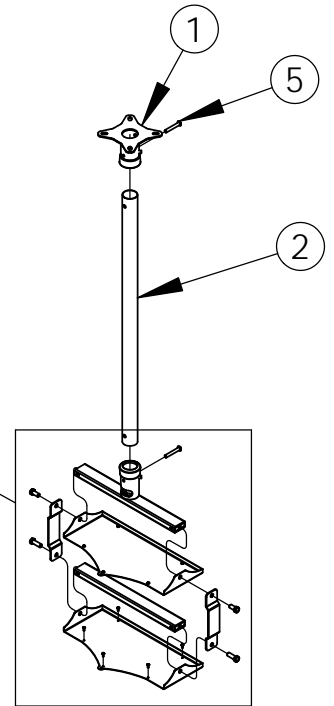
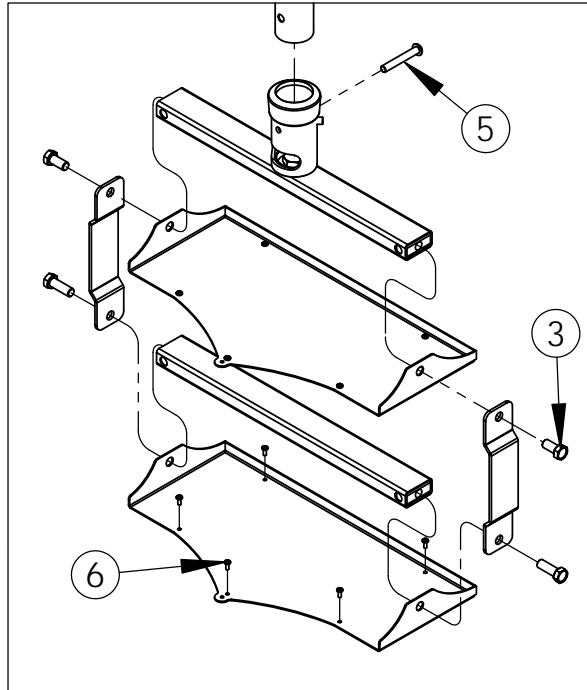


INSTALLATION INSTRUCTIONS

PARTS LIST		
ITEM NO.	PART DESCRIPTION	QTY.
1	CEILING PLATE	1
2	COLUMN	1
3	M12 x 25 HEX HEAD SCREW	4
4	DOUBLE PROJECTOR UNIT	1
5	SAFETY THROUGH BOLT	2
6	PROJECTOR FIXINGS	10



Projectors.
Use fixings provided

Inspect the unit before installing

Warning: Watch for pinch points. Do not put your fingers between moveable parts. Do not tamper with or dis-assemble any spring loaded items.

1. Carefully inspect the unit for shipping damage. If any damages apparent, call your carrier claims agent and do not continue with the installation until the carrier has reviewed the damage.

2. Lay out components to ensure you have all the required parts before proceeding (see parts list).

Caution: To prevent damage to the unit, study all instructions and illustrations before you begin the installation. Failure to do so could render the warranty for the unit and the equipment that attaches to it null and void. Pay particular attention to the "warnings" displayed in these instructions.

Pay attention to the maximum weight that this unit will support. 60kg.

We recommend installation by a qualified tradesperson. If you have any questions about the installation, contact Unicol,
(uk +44 (0) 1865 767676) (europe +49 (0) 9131 9405 8013).

Assembly

CAUTION: The safety throughbolt must be fitted so that it passes through the holes in the column. See points 2 and 4.

1. Fix ceiling plate (1) to ceiling using suitable masonry plugs and bolts (not supplied). Consult onsite architect or engineer for appropriate fixing scheme.
2. Place column (2) into ceiling plate (1) and secure with grub screws and through bolt.
3. Assemble double projector mount (4) as shown.
4. Fit assembled double projector mount (4) to column with grub screws and safety throughbolt.

